

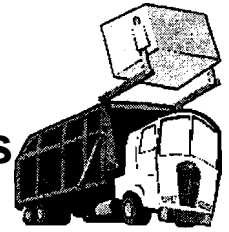


Swanton Township Trash Program

Provided by Allied Waste Services

Answers to Frequently Asked Questions

*****Pickup is now on Monday**



PICK UP SCHEDULE

Please have your trash at **curbside** no later than **5:30 am**. Trash is picked up the second Monday of every month. We are closed on the following holidays: New Years Day, Memorial Day, Fourth of July, Labor Day, Thanksgiving Day and Christmas Day. If the holiday falls on a Monday, your pickup will be on Tuesday.

YOUR SERVICE INCLUDES

Once a month pickup of household trash. Please do not put trash in cardboard boxes or loose trash in trash containers. There a 6 bag or 6 can limit.

All trash containers should be no larger than 33 gallons and weigh no more than 50 lbs. All large or Bulk items are charged extra and need to be paid for in advance by calling Customer Service at 800-234-3429. This includes appliances, televisions, box springs, carpet (bundled, one foot diameter, four feet long), chairs, couches, mattresses, refrigerators (refrigerants must be removed by an authorized agent and certification must be on refrigerator at time of removal, door must be removed).

ADDITIONAL SERVICE

Residents may subscribe directly with Allied Waste for service on all other Mondays. Please contact Customer Service at 800-234-3429 for details.

RESTRICTIONS

The following items are not allowed in our vehicles. Please be sure they are not included in your weekly trash.

- o Liquid paint, pesticides, gasoline, oil
- o Gas cans, disposable LP gas tanks
- o Cement, rocks, bricks
- o Infectious hospital waste
- o Liquid solvents & glue
- o Car batteries, automotive parts
- o Tires, hazardous materials
- o Yard waste
- o Construction Debris
- o Animals
- o Steel and iron

TRASH CONTAINERS

We offer the rental of a 95-gallon **rollaway** cart for **curbside** service. We also have a wide variety of dumpster sizes for commercial, industrial or for your larger residential clean-up or construction needs. Please contact Customer Service at 800-234-3429 for details.

